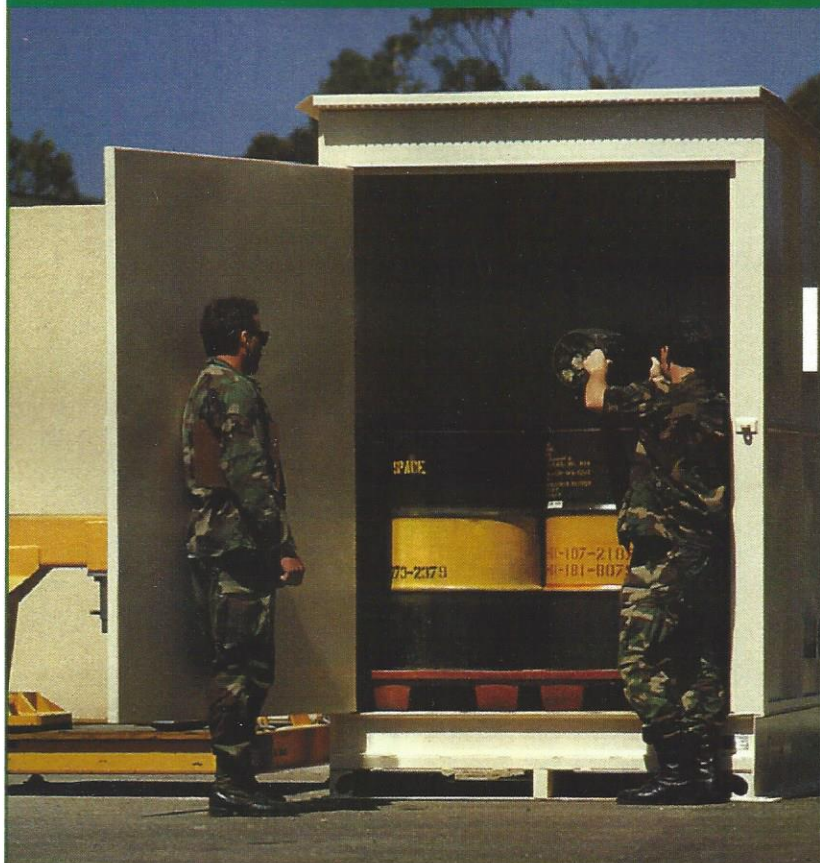


Reduce the cost of storage per unit by 50% with ECP's space-saver modular designed buildings.



Model #5B

- Household Hazardous Waste
- Solid Waste
- Satellite Stations
- Waste Accumulation Areas
- Drive On Containment Systems



Drive on Containment System



GSA contract # GS-28F-0020J



ECP

**Environmental
Compliance Products**

(800) 643-7065

Manufactured in the USA

Portable Hazardous Materials Storage Structures

*Patented

ECP Buildings can store far more, less expensively and more efficiently than any others.

ECP buildings were designed to be Palletized Modular System.



Model #20, for outside storage. Four doors.

Space-saver Modular Designs

Provide twice the space of traditional free-standing buildings. They allow double stacking of larger containers (such as 55-gallon drums) or storing of smaller containers on seismic secondary containment shelving.

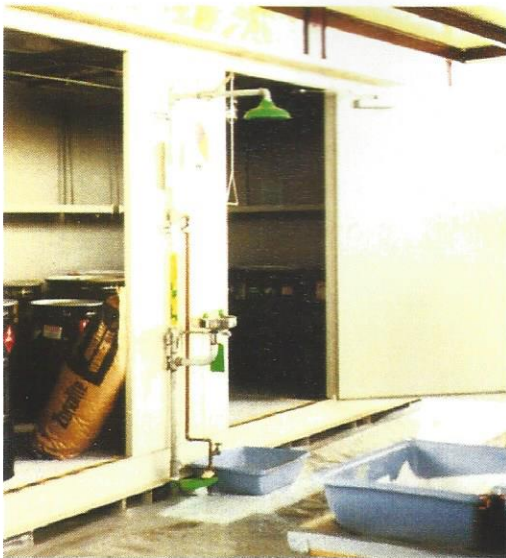
Our standard lockers with the 5'6" depth and the 56" x 82" LxH pallet wide doors (1 door every 5') are designed for forklift loading and are approved for double stacking of 55 gallon drums.

General Development of the Modular Design

First came the overseas containers (ISO, Cargo Sea Trains, etc.). Their designs required hand movement of drums.

Then came hazardous materials storage buildings based on the same designs but with two or three doors added. However, they required the same hand movement of drums.

No Need for Manual Loading of 700 lb. Drums.



Better than Building Your Own

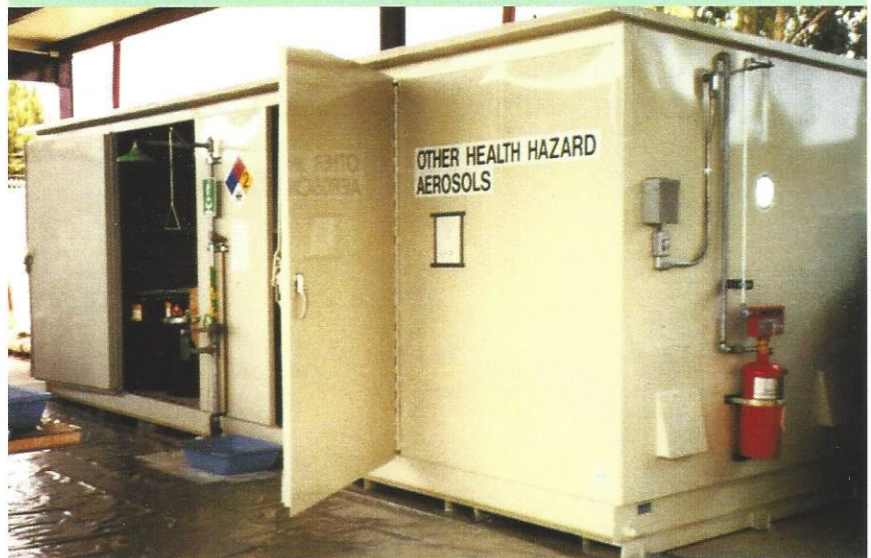
Portable hazmat storage buildings have great advantages over permanent installations. They can be relocated if desired. In most cases, they do not require building permits to install.* Because they are prefabricated, they are less expensive than building from the ground up. General contractors may not be aware of the many code requirements for hazmat storage, creating delays in construction.

*Local jurisdiction has final authority.

ECP has designed and constructed household hazardous waste accumulation facilities for numerous cities and counties throughout the U.S.

Let E.C.P. develop and design your household hazardous waste facilities.

FM approved one to four hour non-combustible fire rated construction available.



Model #S1608B

In short, ECP Buildings are user friendly, more economical than any others on the market today and provide for more efficient handling of hazardous materials.

The system is far superior to any others available today



Two Tier/Tote Storage



Two Tier Storage

"New Generation" Construction

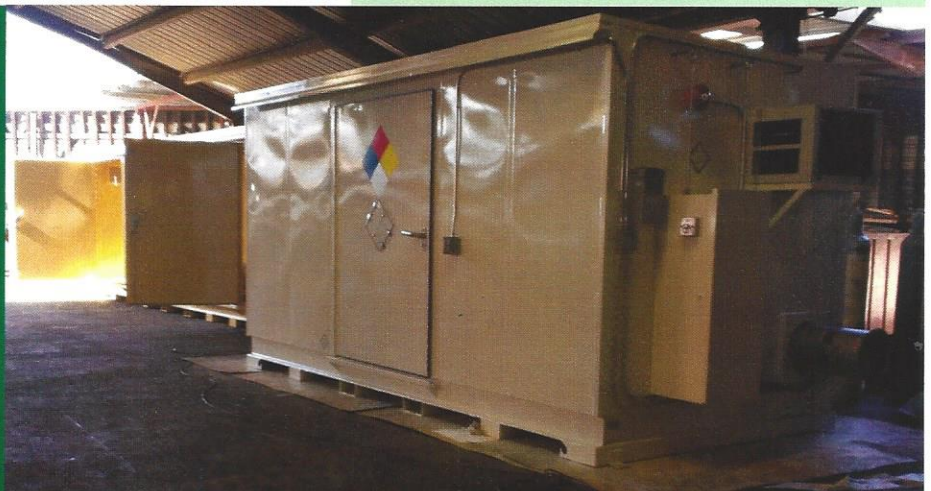
Other MFG's use commercial grade A-569 steel while ECP buildings are constructed with 12 gauge non-commercial grade A-570 steel, which is of a higher quality.

The coatings include two part anti-corrosive epoxies and polyurethanes which serve as insulators from climactic variations.

Building from some manufacturers use less effective protective coating systems. The interior of their buildings may heat or freeze according to outside temperatures.

- ECP buildings are designed on the concept of palletized grids, utilizing space more efficiently.
- ECP buildings are designed for forklift pallet jack handling of drums. OSHA's policies discourage heavy lifting that frequently results in back injuries. The 55-gallon drums, when full, weigh from 400 to 700 pounds each.

The ECP coatings are extremely effective in holding the interior of the building close to ambient temperatures.



Model #S1509DT

Secondary Containment Spill Control

ECP buildings contain one-piece sumps with drain fittings to contain any leaks or spills that might create a groundwater hazard.



Model #10XR. Two door. For storage and dispensing.



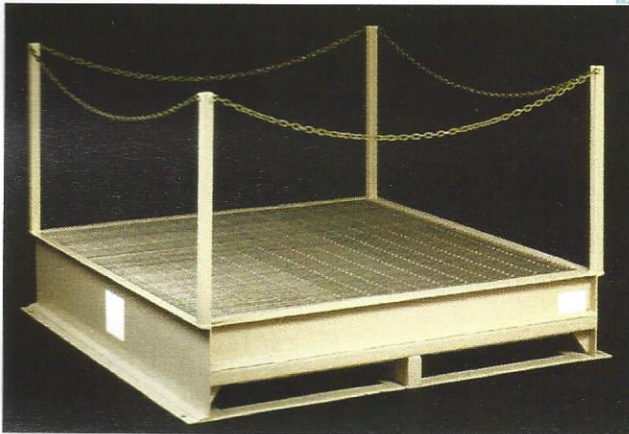
Model #10TDXR. Two door inside seismic storage with secondary containment shelving. Temperature controlled, four hour fire rated and explosion relief.



Model #S3010B

ECP portable hazardous materials buildings are constructed with a number of engineering innovations that make them the most user friendly on the market.

Consider these:



Model #15B

Beneficial Features

- All doors open on the corner posts, not just pallet wide. The 56" to 448" widths available allow access to drums and shelving in the rear of the facility without the necessity of moving drums out of the way.
- Factory Mutual approved explosion relief panels are provided when required by code or local jurisdiction.
- ECP provides heavy-duty load spreaders to prevent doors from sagging under the weight of heavy drums.
- Fork-lift guards are standard on ECP buildings as are static ground connections.
- ECP buildings meet and or exceed code requirements.*

Also Available

ECP makes steel secondary containment pallets. They provide effective containment areas where roofs and security are not required. They provide easy access, and are built with the same type of grid floor, the same coating systems and one-piece sumps and fork-lift guards as are used in the full buildings.

ECP prefabricated, weatherproofed buildings offer the finest, low-cost solution to meeting the requirements for safe storage of chemical hazards in your facility.

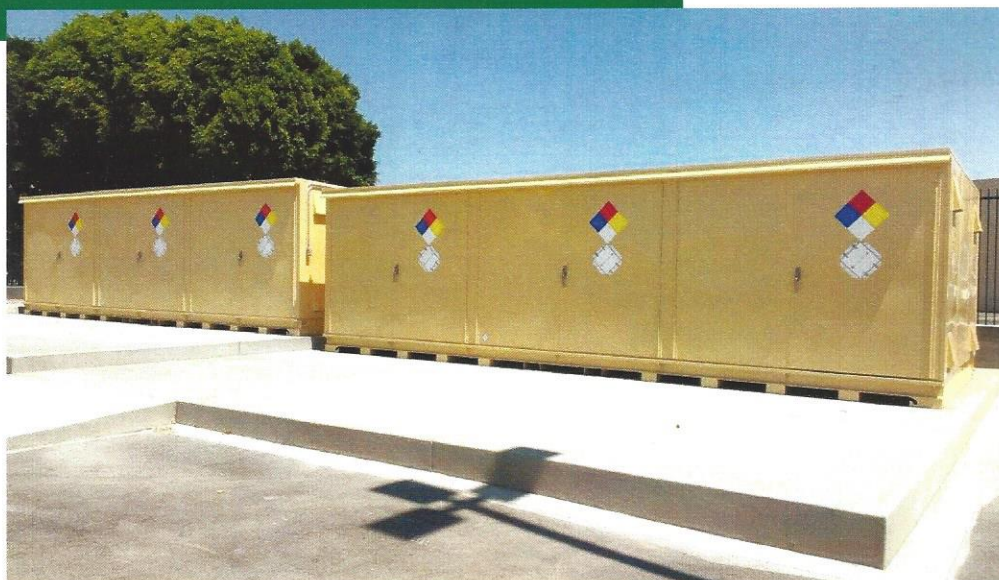
They also assure safe secondary containment for ground water protection, meet fire safety needs, minimize liability and safeguard personnel while complying with federal, state and local regulations.*

*Local jurisdiction has final authority.

Whether your needs are for larger containers such as 55 gallon drums and totes, or for smaller containers such as 1 liter, 4 liters, 1 gallon or 5 gallon, or a combination of both.

The cost of storage per unit is reduced by as much as 50% compared to other portable structures when you select ECP Modular Buildings for your hazardous storage needs.

Units also available with heating, cooling, dry chem, mechanical ventilation, lighting, leak detection, eyewash, and many other options to meet your needs.



Model #S3010B



Model #S4010BT

Hazardous Material Storage Buildings
(Single skin welded steel construction)

FM Approved

Model Number	Nominal Size Length-Width-Height	Tare Weight Approx. Weight	Storage Capacity Sq. Footage		55 Gal. Drum		Secondary Sump Capacity Minimum	Door Openings Height	Width	Amount of Doors	Total Door Opening
			*SL	*DL	*SL	**DL					
5	5'6" x 5'6" x 8'6"	1,945	28	56	5	9	124	82"	56"	1	56"
10	10'6" x 5'6" x 8'6"	3,128	56	112	11	17	240	82"	56"	2	112"
15	15'6" x 5'6" x 8'6"	4,520	82	164	16	27	375	82"	56"	3	168"
20	20'6" x 5'6" x 8'6"	5,751	110	220	22	37	509	82"	56"	4	224"
25	25'6" x 5'6" x 8'6"	7,135	137	274	27	46	633	82"	56"	5	280"
30	30'6" x 5'6" x 8'6"	9,080	165	330	32	55	757	82"	56"	6	336"
35	35'6" x 5'6" x 8'6"	10,460	192	384	38	56	960	82"	56"	7	392"
40	40'6" x 5'6" x 8'6"	11,952	220	440	44	64	1097	82"	56"	8	448"

*SL = Single Level DL = Double Level

For 1, 2, 3 or 4 hour fire rating, add A, B, C or D to Model No.
For explosion relief design, add XR to Model No.

Partial "S" Series Buildings

Available up to 45'L x 14'W

FM Approved

Model Number	Nominal Size Length-Width-Height	Tare Weight Approx. Weight	Storage Capacity Sq. Footage		55 Gal. Drum		Secondary Sump Capacity Minimum	Door Openings Height	Width	Amount of Doors	Total Door Opening
			*SL	*DL	*SL	**DL					
S0606	6'6" x 6' x 8'6"	1,800	39		6		140	82"	56"	1	56"
S0709	7' x 9' x 8'6"	3,400	63		12		250	82"	56"	1	56"
S1008	10' x 8' x 8'6"	5,400	75		12		374	82"	56"	2	112"
S1208	12' x 8' x 8'6"	6,400	90		15		448	82"	56"	2	112"
S1509	15' x 9' x 8'6"	6,000	135		28		500	82"	56"	2	112"
S1608	16' x 8' x 8'6"	6,000	128		24		420	82"	56"	2	112"
S2008	20' x 8' x 8'6"	9,800	150		27		748	82"	56"	4	224"
S2209	22' x 9' x 8'6"	8,600	196		44		750	82"	56"	3	168"
S3009	30' x 9' x 8'6"	11,500	270		60		1346	82"	56"	6	336"
S3010	30' x 10' x 8'6"	12,900	300		75		1496	82"	56"	6	336"
S4010	40' x 10' x 8'6"	17,100	400		100		1994	82"	56"	8	448"

For 1, 2, 3 or 4 hour fire rating, add A, B, C or D to Model No.
For explosion relief design, add XR to Model No.

CUSTOM UNITS AVAILABLE

GSA contract # GS-28F-0020J

Manufactured in the USA

Other Products:

- Flammable Cabinets
- Equipment Shelters
- Seismic Secondary Containment Shelving Systems
- Drive On Containment Systems



**Environmental
Compliance Products**

Portable Hazardous Materials Storage Structures



We are Your Solution to Hazardous Material Storage

(800) 643-7065